

# Once Upon a Lifetime - Part I

♩ = 120

1.

2.

3.

o-zone crach

x4

1.

2.

1. 3.

2.

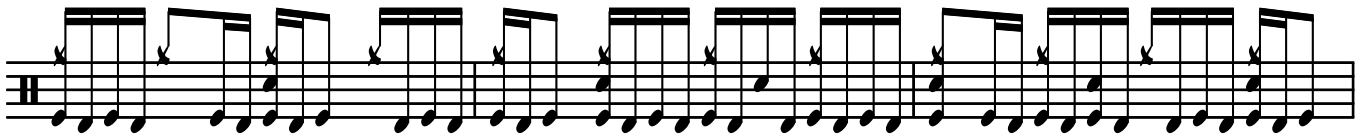
vrs

4.

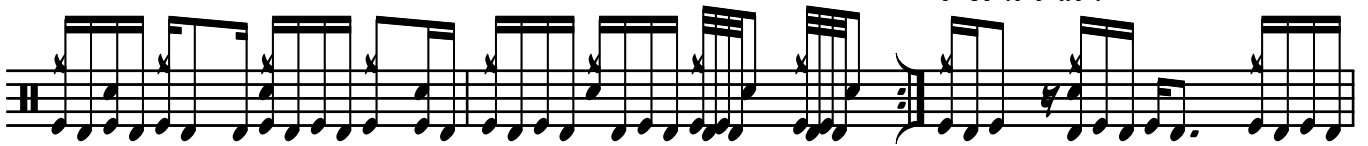
*Once Upon a Lifetime*



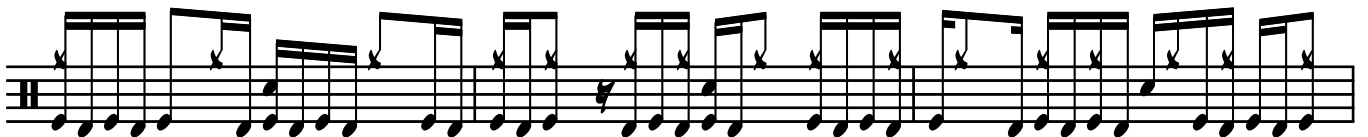
*crasher*



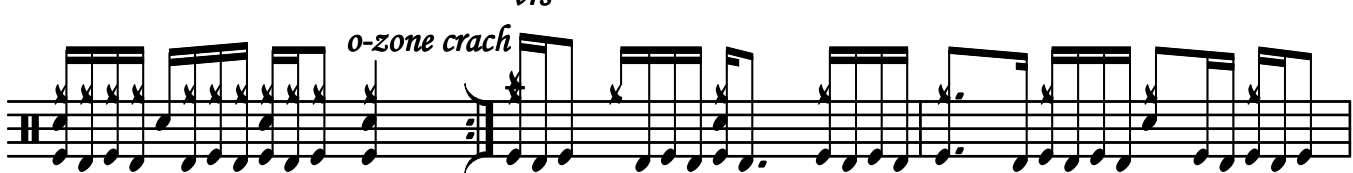
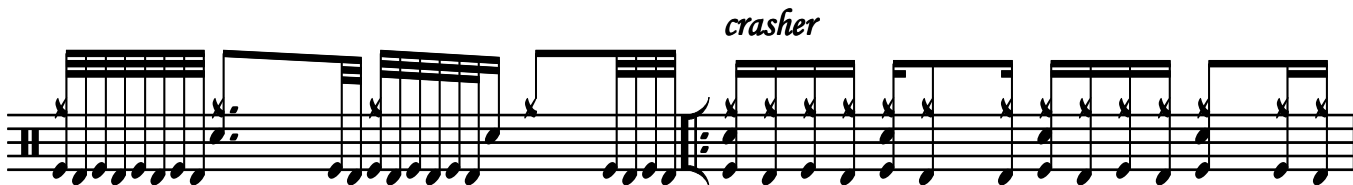
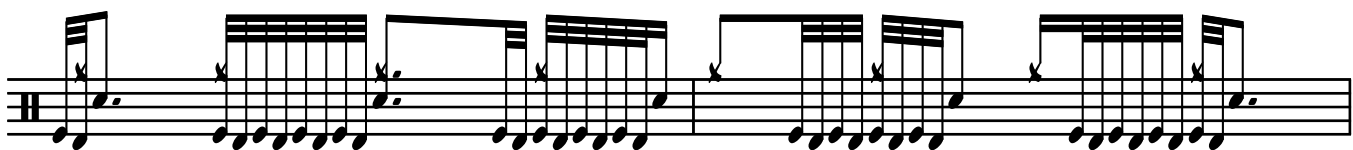
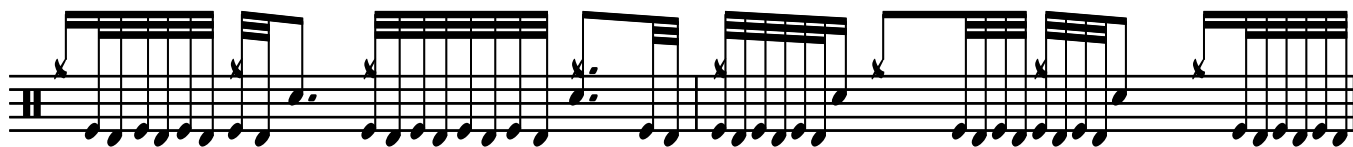
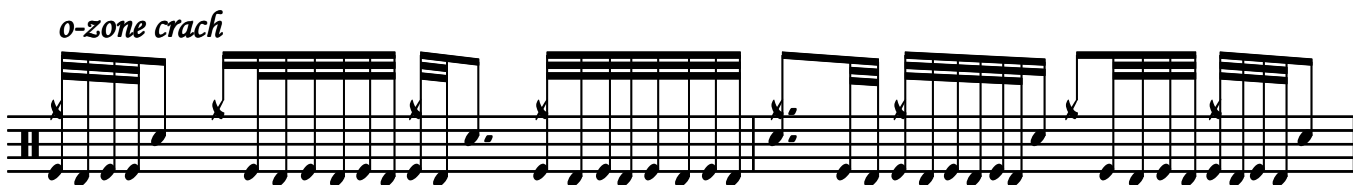
*o-zone crach*



*crasher*



*Once Upon a Lifetime*



*Once Upon a Lifetime*

The musical score for "Once Upon a Lifetime" consists of ten staves of guitar tablature and two staves of standard notation. The first ten staves are guitar-specific, with rhythmic markings above the notes and fret numbers below. The first six staves feature a complex, repetitive rhythmic pattern of eighth and sixteenth notes. The seventh staff continues this pattern with some variations. The eighth staff shows a change in the rhythmic structure, with longer note values. The ninth staff features a series of sixteenth-note runs. The tenth staff concludes with a final chord marked with a '7' above it. The eleventh and twelfth staves are standard musical notation, showing the melodic line and bass line respectively, with a key signature of one sharp (F#) and a common time signature.